

E 1/4 COR SEC 5
T 17N, R 62W

062629

"P-3"

RECEIVED
LARAMIE COUNTY
CHEYENNE, WY.

CERTIFIED LAND CORNER RECORDATION

OCT 5 PM 3 00

DESCRIPTION OF CORNER EVIDENCE FOUND, AND ORIGINAL RECORD (If known)

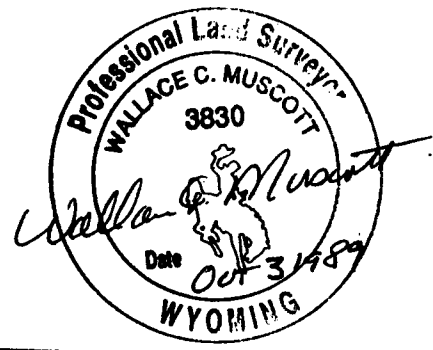
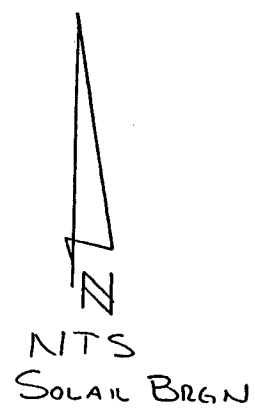
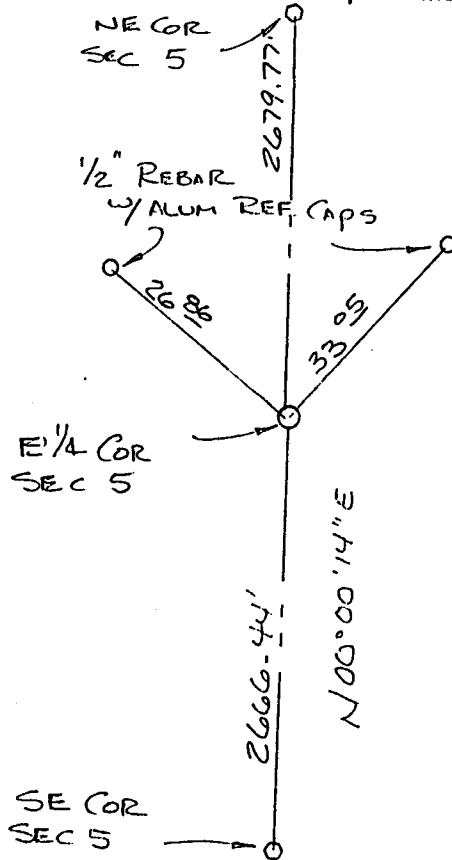
FOUND MANY SCATTERED LIMESTONE ROCKS IN THE VICINITY OF THIS CORNER BUT NOTHING THAT IS EVIDENT AS BEING THE TRUE CORNER. THE ORIGINAL GLO STONE WAS A 16X10X4 SANDSTONE. FOUND NO EVIDENCE OF ANY RESURVEY. CALLED THE CORNER LOST AND RESET BY SINGLE PRO-RATES.

DESCRIPTION OF MONUMENT AND ACCESSORIES ESTABLISHED TO PERPETUATE THE ORIGINAL LOCATION OF THIS CORNER:

AT THE CALCULATED POINT FOR THIS CORNER, SET A 5/8" X 30" REBAR WITH A CORPS OF ENGINEERS BRASS CAP ON TOP. RAISED A MOUND OF STONE 2' REFERENCED AS SHOWN BELOW.

AUG. 4 1989

SKETCH, WITH COURSE AND DISTANCE TO ADJACENT CORNER IF DETERMINED IN THIS SURVEY. (May Sketch or Paste Reproduction on Reverse Side.)



I, Wallace C. Muscott certify that I have carefully performed or reviewed the work done on the diagrammed corner as reported on this recordation form and approve the same.

Wallace C. Muscott 3830
Signature of Surveyor Registration No.

STATE OF WYOMING,
Office of Clerk and Recorder,
County of _____

This "corner record" was filed for record on the _____ day of _____, 19____, was noted on the cross-index plat and is assigned page No. _____, in book No. _____.

County Official			
Cross Index No. <u>C-9</u>	T. <u>17N</u>	R. <u>62W</u>	Mer. _____
_____	T. _____	R. _____	Mer. _____
_____	T. _____	R. _____	Mer. _____
_____	T. _____	R. _____	Mer. _____
_____	T. _____	R. _____	Mer. _____
_____	T. _____	R. _____	Mer. _____
_____	T. _____	R. _____	Mer. _____